

CATALOGUE



**Complete range of products and systems
for fire alarm installations**

www.sd3.fr



A world of fire detection equipment



Dear customer,

SD³ is very proud to introduce our new catalogue to you. New products, new design, fluent explanations and system views have been our leitmotiv for this latest realisation.

You will find inside a synthetic view of how SD³ works and how it has progressed.

This edition has been enriched with an enlarged range of products in order to always supply the most complete offer in fire alarm systems.

The European standard and CE CPD certifications become more and more essential to be recognised as a trustful manufacturer. SD³ constantly aims to meet the latest rules and standards to deliver an **updated passport certification**.

Our factories SEFI and FARE, pillars of SD³, are now in a new modernised building including cutting-edge manufacturing and logistic processes.

All this organisation enables us to expand our presence on the market and to get your confidence to build an excellent partnership.

We wish you the best future with SD³.

Bernard Mongelli
Managing Director



TABLE OF CONTENTS

1/ CONVENTIONAL SYSTEMS.....	8-9
CONVENTIONAL GENERAL VIEW.....	8-9
A/ PANELS.....	10
B/ FIRE DETECTORS.....	12
C/ MANUAL CALL POINTS.....	14
D/ AIR DUCT DETECTION.....	15
E/ STAND ALONE SMOKE ALARM DETECTOR.....	15
F/ LINEAR HEAT DETECTION.....	15
2/ INTELLIGENT / INTERACTIVE PANELS AND DETECTORS.....	16-17
ADDRESSABLE GENERAL VIEW.....	16-17
A/ PANELS.....	18
B/ INTELLIGENT FIRE DETECTORS.....	21
C/ ADDRESSABLE MANUAL CALL POINTS.....	22
D/ LOOP SOUNDERS	22
E/ INTERFACE LOOP UNITS.....	23
F/ PROGRAMMING AND MAINTENANCE TOOL.....	23
SPECIFIC PRODUCTS GENERAL VIEW.....	24-25
3/ LINEAR SMOKE DETECTORS.....	26
4/ AIR SAMPLING DETECTION.....	28
5/ EXPLOSION HAZARD AREA PRODUCTS.....	29
6/ WIRELESS SOLUTIONS.....	30
7/ ACCESSORIES FOR FIRE SYSTEMS.....	31
8/ MONITORING SOFTWARE.....	33
9/ HEPHEA POWER SUPPLY RANGE.....	34
10/ GAS DETECTION.....	35
A/ CONVENTIONAL GAS DETECTORS.....	35
B/ ADDRESSABLE PANELS.....	36
C/ ADDRESSABLE GAS DETECTORS.....	36
D/ EXPLOSION PROOF GAS DETECTION.....	37
11/ MARINE.....	38
A/ ADDRESSABLE PANELS.....	38
B/ ADDRESSABLE DETECTORS.....	38
12/ VOICE EVACUATION SYSTEMS.....	39
13/ ELECTRIC LOCK FOR EMERGENCY EXIT DOORS.....	40
14/ FIRE ALARM CABLE.....	40
15/ MAINTENANCE EQUIPMENT.....	41
A/ TEST AND MOUNTING TOOLS.....	41
B/ SPARE PARTS.....	42-43



SD³ Presentation

THE COMPANY

Founded in 2002, SD³ Security Detection Direct Distribution belongs to the 1st French fire detection systems factories :

- FARE that designs and manufactures the whole range of detectors.
- SEFI that designs and manufactures the whole range of fire alarm panels.

SD³ represents their export department all over the world.

We use the concept of **direct delivery from factories**, providing **flexibility and competitiveness**.

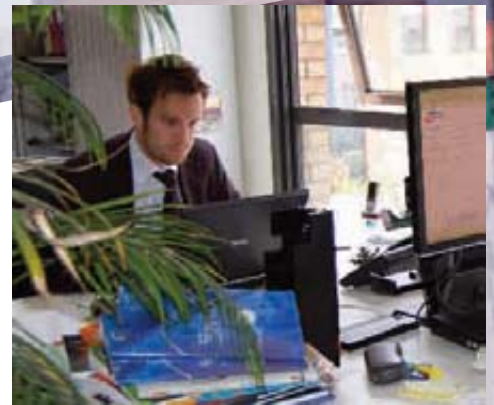


CERTIFICATIONS

Our EN54 and CE certification according to CPD by a notified body is an export passport to build partnerships.

MADE IN FRANCE





PRODUCTS *A complete range for many applications.*

SD³ offers a complete range of fire detection products dedicated to:

- Installers specialized in security systems
- Distributors with technical assistance
- Security systems manufacturers.

As we are a flexible structure directly in contact with factories and R&D departments, we are able to meet all your requirements to match your market.

Moreover, we are able to **customize your products with your own brand, logo, and language.**

SERVICES *Reactive and quality services.*

Commercial department : our reliable sales team is able to inform and advise you, adapting our offers to each application.

Technical support : our technical support team is able to answer all your questions and organize trainings all over the world in order to help you get the right knowledge on the whole SD³ products range.

Marketing department : our marketing team is ready to provide you all necessary tools and useful information to introduce our range in your country.

Logistic support : our professional experts are able to inform you step by step about the logistical process, from your order to the delivery.





SD³ ORGANISATION



First French group manufacturer



FIRE ALARM SYSTEMS



Detectors, Call points, Modules
Location: FRANCE

Created in 1989, FARE is specialised in developing and manufacturing conventional and addressable detectors. FARE aims to develop its business through the quality design and process of its detectors. FARE owns a tool of modern production, making high investment in order to ensure a large production capacity in SMD cabling. FARE has also its own R&D department able to design new detectors or customise them for SD³ partners thanks to a professional and dynamic staff.

FARE CERTIFICATIONS :
ISO / AFNOR / BOSEC / CPD by notified body



Conventional and Intelligent/Addressable panels
Location: FRANCE

SEFI was founded in 1970. The company manufactures conventional and addressable fire alarm panels and auxiliaries. SEFI owns last generation production tool SMD machines and sophisticated monitoring tests. SEFI has also its own R&D department.

SEFI CERTIFICATIONS :
ISO / AFNOR / BOSEC / VDS / CPD by notified body



Gas detectors and panels,
Power supply
Location: Verona ITALY





CUSTOMERS

EXPORT DEPARTMENT

Commercial relationships
Technical trainings
Assistance

Distribution under the factories brand all over the world
Location : Massy (Paris)
FRANCE

EM FACTORIES

SD³ view of factories and logistic

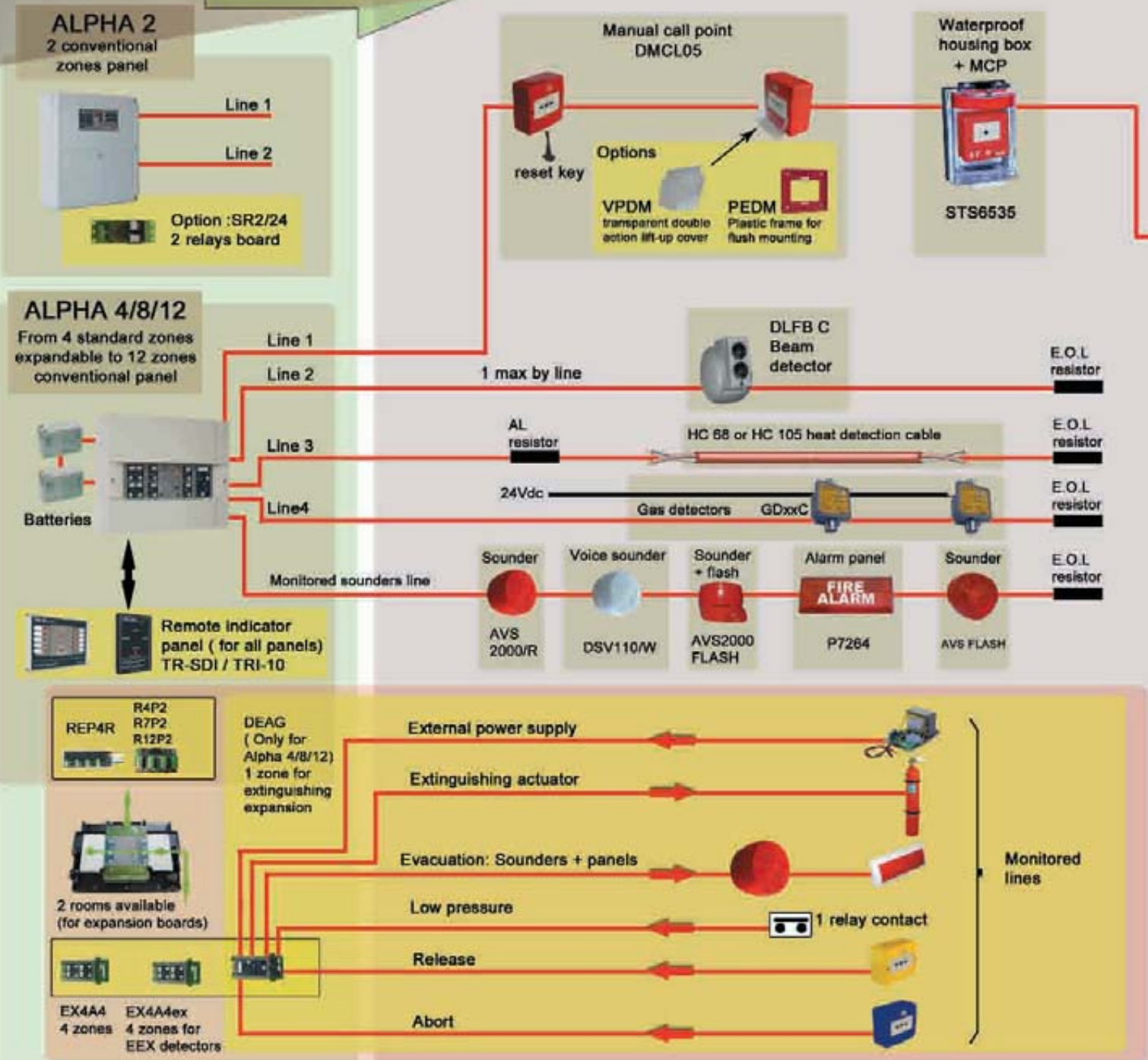


Accessories
Location: Massy (Paris)
FRANCE





CONVENTIONAL GENERAL VIEW



Intrusion panel



DETECTOR WITH NO-NC RELAY

Smoke detector,
Heat detector
OC05.12
TRC05.12
TSC05.12

12Vdc APPLICATION WITH 05 RANGE (Alarm latched or Alarm resettable version)

Smoke detector
Heat detector
OC05, TRC05,
TSC05

IND05
alarm
indicator



S05SE Base

Flushmounting
piece for detector
PES05



S05SE Base

Smoke detector,
Heat detector
OC05
TRC05
TSC05

FLUSHMOUNTED
DETECTOR



Smoke detector,
Heat detector
OC05
TRC05
TSC05

S05SE Base

R05
Relay card

DETECTOR WITH
NO-NC RELAY



Smoke detector,
Heat detector
OC05
TRC05
TSC05

S05SE Base

SOUND05

DETECTOR WITH
SOUNDER BASE
95 dB @ 1m



Smoke detector,
Heat detector
OC05
TRC05
TSC05

S05 Base

BRI(IP65)
or BRI/EM

DETECTOR WITH
TUBE CONNECTIONS



Infrared flame
detector IP65



IRY2-IP65

E.O.L
resistor

Infrared flame
detector
IRY2 + S95 base

Infrared flame detector
typical distance = 17m



Vision
cone 90°

Ultraviolet flame
detector
SUV +ES base

Ultraviolet flame detector
typical distance = 17m



Vision
cone 120°

Air duct detector
housing box

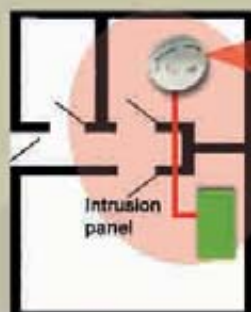
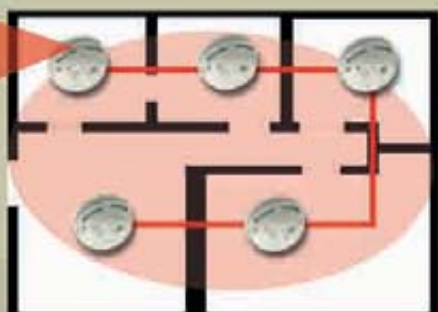


BTG05
with detector :
OC05

Multicriteria
detector



MCY2
+S95 Base



Intrusion
panel

DAAF-REL
Repetition to
Intrusion panel





CONVENTIONAL SYSTEMS

PANELS

2 zones

ALPHA 2

Options



ALPHA 2

2 ZONES FIRE DETECTION CONVENTIONAL PANEL, max 32 detectors and/or MCP per line. Alarm/fault output relays , 1 monitored sounders line + 3 output relays and 1 programmable open collector. Alarm prealarm management. Compact panel not expandable. Needs 2 internal batteries 12V/4Ah

SR2/24



2 WAYS RELAY output module, NO-NC 30V/1A to be plugged inside ALPHA2 panel

From 4 up to 12 zones

ALPHA 4/8/12

Options

Explosion: Sô næ

ALPHA 4/8/12



12 ZONES FIRE DETECTION CONVENTIONAL PANEL equipped with 4 zones (max 12 zones) - max 32 detectors and/or MCP per line. Alarm/fault relays, 1 monitored sounders line, 4 programmable open collectors, 1 programmable input. Alarm prealarm/management + Day night mode. Expandable panel with availability of 2 rooms for one or two 4 zones expansion (EX4A4) or one or two Extinguishing boards (DEAG). EN54-2, EN54-4 AFNOR, BOSEC, CE CPD, EN12094-1 with extinguishing board (DEAG). Needs 2 batteries 12V/7Ah

EX4A4



4 ZONES EXPANSION BOARD, max 32 detectors and/or MCP per line, 1 or 2 EX4A4 boards can be plugged in ALPHA 4/8/12 and permits to expand the panel to 8 (with 1xEX4A4) or to 12 zones(with 2xEX4A4)

EX4A4ex



4 ZONES EXPANSION BOARD Ex VERSION to be used with explosion hasard area detectors, max 10 detectors per line, 1 or 2xEX4A4ex can be plugged in ALPHA4/8/12 and permits to include max 8 intrisically detector zones

DEAG



1 ZONE EXTINGUISHING EXPANSION BOARD, to be used for management of 1 extinguishing channel. All monitored lines : Extinguishing actuators, Evacuation panels, Release button, Abort button, Low pressure contact. This board permits to convert ALPHA 4/8/12 panel in a detection-extinguishing panel

REP4R



4 WAYS RELAY CARD, NO-NC 30V/1A , to be plugged inside the panel, connection by wires with programmable open collectors of ALPHA 4/8/12

R4P2



4 WAYS RELAY CARD, NO-NC 30V/1A, to be plugged inside the panel, serial communication, permits to repeat states of the panel on 4 relays

R7P2



7 WAYS RELAY CARD, NO-NC 30V/1A, to be plugged inside the panel, serial communication, permits to repeat states of the panel on 7 relays

R12P2



12 WAYS RELAY CARD, NO-NC 30V/1A, to be plugged inside ALPHA 4/8/12 panel, serial communication, permits to repeat states of the panel on 12 relays



CONVENTIONAL SYSTEMS

PANELS

From 16 up to 248 zones

ALPHA 16/248

Options



ALPHA 16/248

248 ZONES FIRE DETECTION CONVENTIONAL PANEL equipped with 16 zones expandable to 248 - Alphanumeric display 2x16 - Mimic panel integrated for 32 zones (alarm, fault, disable, test). Max 32 detectors and/or MCP per line. Alarm/fault relays, 1 monitored sounders line + 3 output relays and 1 programmable open collector. Alarm prealarm management. Needs 2xbatteries 12V/12Ah

EX8Z



8 ZONES EXPANSION BOARD max 32 detectors and/or MCP per line, to be plugged inside ALPHA16/248 panel

EX8R



8 WAYS RELAY CARD, NO-NC 30V/1A, to be plugged inside ALPHA16/248 panel, programmable relays, permits to repeat states of the panel on 8 relays

Accessories for panels



TR-SDI

REMOTE INDICATOR PANEL with leds and function keys, to repeat general alarm and fault, local test leds and silence buzzer



TRI 10

10 ZONES REMOTE INDICATOR PANEL with leds and function keys, permits to repeat fire alarm zones, local test leds and silence buzzer



CONVENTIONAL SYSTEMS

FIRE DETECTORS

05 range



● **OC05**
CONVENTIONAL OPTICAL SMOKE DETECTOR, 1 remote led output, EN54-7, CE according to CPD.



● **TRC05**
CONVENTIONAL RATE OF RISE + FIXED HEAT DETECTOR, $T^{\circ} = 62^{\circ}\text{C}$, $+ 9^{\circ}\text{C}/\text{min}$, 1 remote led output, EN54-5, CE according to CPD.



● **TSC05-A1S**
CONVENTIONAL FIXED HEAT DETECTOR, $T^{\circ} = 62^{\circ}\text{C}$, 1 remote led output, EN54-5, CE according to CPD.



● **TSC05-BS**
CONVENTIONAL FIXED HEAT DETECTOR, $T^{\circ} = 75^{\circ}\text{C}$, 1 remote led output, EN54-5, CE according to CPD.

12Vdc application with 05 range



● **OC05.12 or OC05.12-AR**
CONVENTIONAL OPTICAL SMOKE DETECTOR, for 12V security type systems, to be used with R05 relay board, alarm latched or autoresettable (AR version)



● **TRC05.12 or TRC05.12-AR**
CONVENTIONAL RATE OF RISE + FIXED HEAT DETECTOR, $T^{\circ} = 62^{\circ}\text{C}$, $+ 9^{\circ}\text{C}/\text{min}$, for 12V security type systems, to be used with R05 relay board, alarm latched or autoresettable (AR version)



● **TSC05-A1S.12 or TSC05-A1S.12-AR**
CONVENTIONAL FIXED HEAT DETECTOR, $T^{\circ} = 62^{\circ}\text{C}$, for 12V security type systems, to be used with R05 relay board, alarm latched or autoresettable (AR version)



● **TSC05-BS.12 or TSC05-BS.12-AR**
CONVENTIONAL FIXED HEAT DETECTOR, $T^{\circ} = 75^{\circ}\text{C}$, for 12V security type systems, to be used with R05 relay board, alarm latched or autoresettable (AR version)

Bases and accessories

S05SE



UNIVERSAL BASE WITH STICK ADDRESS SOCKET for 05-range conventional and addressable detectors.

PES05



FLUSHMOUNTING PIECE FOR BASE (Base not included), permits to flushmount a 05 range detector.

SOUND05+S05



BASE WITH INTERNAL SOUNDER 95db @ 1m, Possibility to select 6 tones and 3 intensity levels, EN54-3, CE according to CPD.

R05



RELAY BOARD (12V or 24V) for 05 detectors (to be plugged in S05), NO-NC 30V/1A

CS05



PROTECTION PLATE for S05 base, permits to cover a base without detector.

BRI/EM + S05



Universal base with GLANDS HOLE for 05range, base for tubes connections.

BRI + S05



WATERPROOF universal base with glands for 05 range (IP65), base for tubes connections supplied with glands

GAV



ANTIVANDALISM protection grid



CONVENTIONAL SYSTEMS

FIRE DETECTORS



● MCY2+S95

CONVENTIONAL MULTISENSOR (OPTICAL - HEAT) DETECTOR, 1 remote led output, EN54-7 , base included.



● IRY2+S95

CONVENTIONAL INFRARED FLAME DETECTOR, 1 remote led output, vision cone $\pm 45^\circ$, Distance max 25m, EN54-10, CE according to CPD , base included.



● IRY2-IP65

CONVENTIONAL INFRARED FLAME DETECTOR, 1 remote led output, vision cone $\pm 45^\circ$, Distance max 25m, EN54-10, CE according to CPD , IP65 box, dim 225x175x80.



● SUV+ES

CONVENTIONAL ULTRA VIOLET FLAME DETECTOR, 1 remote led output, vision cone $\pm 60^\circ$, radiation analysis range from 80nm to 270nm, base included.



CONVENTIONAL SYSTEMS

MANUAL CALL POINTS

05 range



- **DMCL05**
CONVENTIONAL MANUAL CALL POINT resettable with key without breaking glass, led and alarm resistor integrated, RED colour, EN54-11, CE according to CPD



- **DMCL05-J**
CONVENTIONAL MANUAL CALL POINT resettable with key without breaking glass, led and alarm resistor integrated, YELLOW colour



- **DMCL05-B**
CONVENTIONAL MANUAL CALL POINT resettable with key without breaking glass, led and alarm resistor integrated, BLUE colour

05 MCP

Accessories

- **PEDM** PLASTIC FRAME for flush mounting MCP



- **VPDM** TRANSPARENT LIFT-UP protective cover for MCP, permits a double action (supplied with protection label)



- **KCTDM** KIT OF 10 RESET KEYS for MCP



- **STS6535** WATERPROOF IP65 HOUSING BOX for conventional and addressable manual call point with reset (call point not included)





CONVENTIONAL SYSTEMS

AIR DUCT DETECTION



● BTG05-P5901

AIR DUCT DETECTOR HOUSING for 05 range (detector not included), dimensions 220x186x105mm, IP55

STAND ALONE SMOKE ALARM

VESTA



● VESTA

DOMESTIC PHOTOELECTRIC SMOKE ALARM DETECTOR with 9V battery, CE EN14604 according to CPD

VESTA

● Accessories

● DAAF-REL

PLUG IN CARD with NO contact, permits to repeat the state of alarm (for intrusion panels)



● DAAF-INTER

PLUG IN CARD for 2 wires interconnection, permits to connect one or more VESTA in 2 wires network



LINEAR HEAT DETECTION



● HC68

LINEAR HEAT DETECTION cable 68° (price per meter) connectable directly to conventional panels or addressable modules



● HC105

LINEAR HEAT DETECTION cable 105° (price per meter) connectable directly to conventional panels or addressable modules



ADDRESSABLE GENERAL VIEW



HEPHAIS 128

From 1 to 128 addresses

1st POSSIBILITY:
4 open lines,
max 32
detectors/line



2nd POSSIBILITY:
128 addresses max
dispatched on 2 loops

Options



ALPHA RE
Remote user
interface panel



TELEHEPHAIS 128
Programming tool



IMP/E Serial printer

HEPHAIS 1600 NE

From 1 to 400 addresses

Options



TELEHEPHAIS 1600
Programming tool



IMP/E Serial printer



2 loops:
200 addresses/loop



ALPHA RE
Remote user
interface panel

HEPHAIS 1600

From 1 to 1600 addresses
Up to 16 loops



BASE: 2 loops
(200 addresses/loop)

MODULARITY:
From 1 to 7 MG2B
(2 loops board) :
200 addresses/loop

IE2M necessary
if > 10 loops needed

Options



RFH1600
Remote user interface control
and command panel



ALPHA RE
Remote user
interface panel



TELEHEPHAIS 1600
Programming tool



MAPSKIT
Monitoring software



IMP/E
Serial printer

Manual call point
with isolator
DMA05

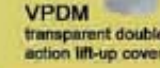


reset key

Manual call point
with isolator and
relay
DMA05R



Options



VPDM
transparent double
action lift-up cover



PEDM
Plastic frame for
flush mounting

Waterproof
MCP



STS6535
+
DMA05

Addressable loop:
128 addresses max
for HEPHAIS 128
200 addresses max for
HEPHAIS 1600 NE
and HEPHAIS 1600



Monitored
sounders line

Sounder



AVS
2000/R

Voice sounder



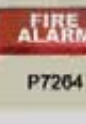
DSV110/W

Sounder
+ flash



AVS2000
FLASH

Alarm panel



FIRE
ALARM
P7264

* Only for HEPHAIS 1600 NE and HEPHAIS 1600

Wireless solutions
OI05, OA05-W,
DMA05-W



Addressable sounder
AVSA 05, 95db@1m



Intelligent/interactive
air sampling detector
DFA05



24Vdc

Network tubes

HEPHAIS 1600-400/L

HEPHAIS 1600-400/S BB

RS 485 NETWORK



MGNET
network
card



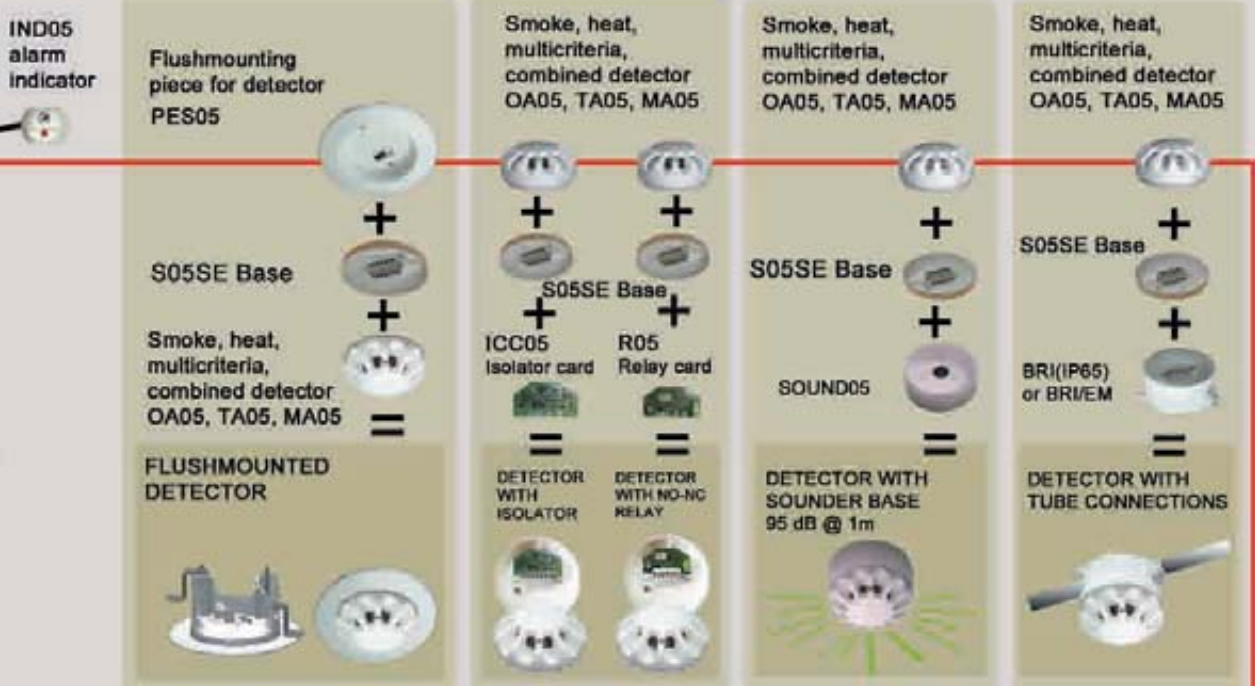
MGNET
network
card



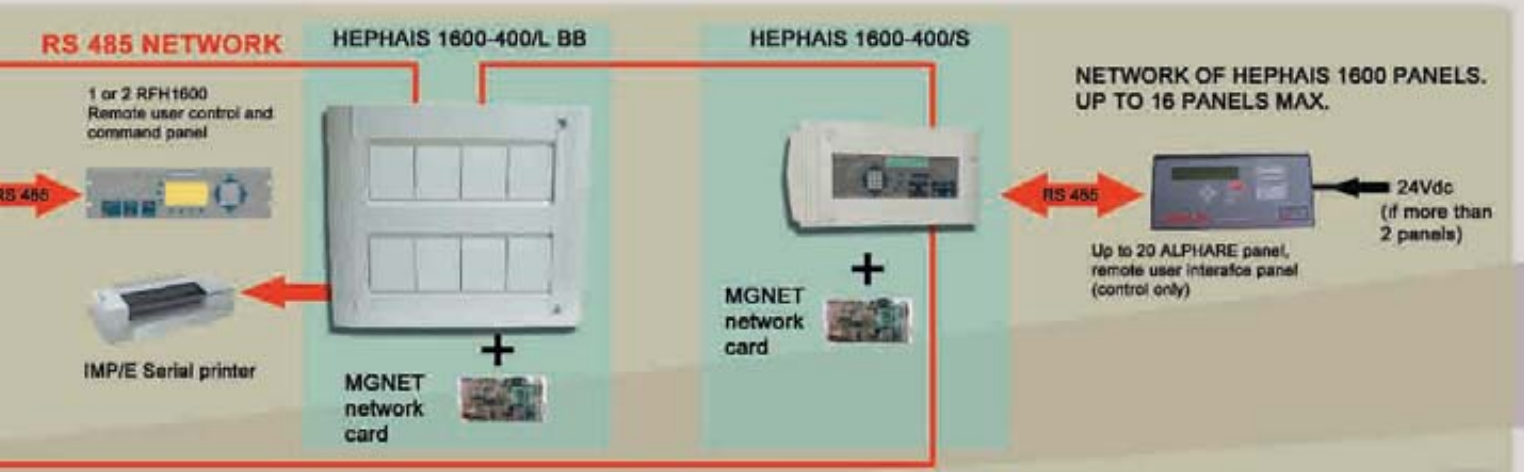
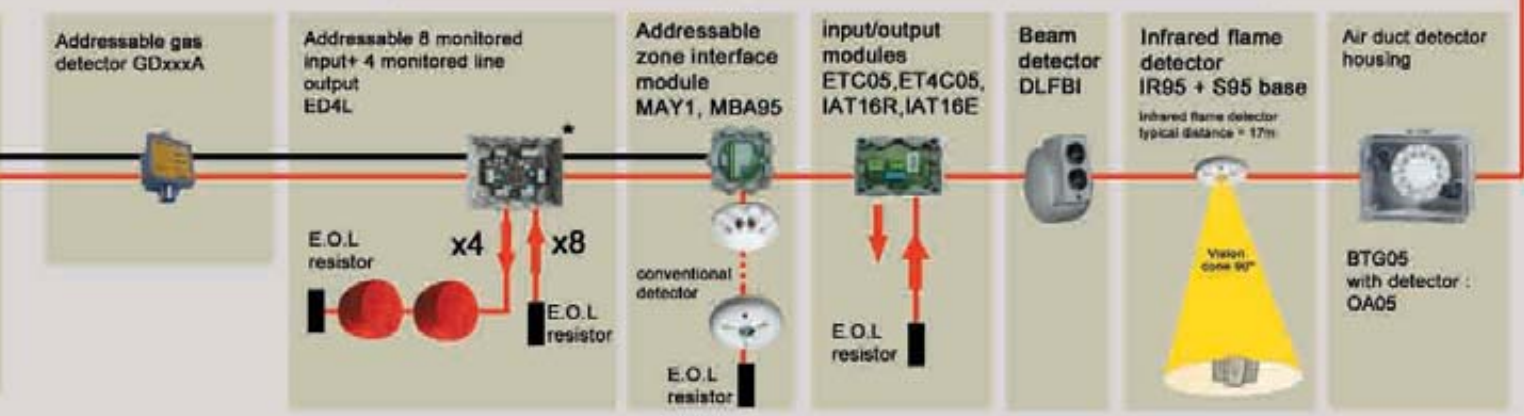
Smoke, heat, multicriteria, combined detector
OA05, TA05, MA05

MINIBT05 allows 3 fonctions:
 - manual coding
 - automatic coding
 - line verify (loop/line scanning)

MINIBT05
 PORTABLE TOOL FOR ADDRESSABLE
 DETECTORS AND DEVICES



HEPHAIS 1600





INTELLIGENT/INTERACTIVE PANELS AND DETECTORS

PANELS

From 1 to 128 addresses

HEPHAIS 128

Options



HEPHAIS 128

INTELLIGENT/INTERACTIVE COMPACT CONTROL PANEL, 128 ADDRESSES, 2 master loops or 4 spur circuits (open circuit with max 32 addresses), 99 ZONES, 1000 memory events, 1 monitored sounders line + 5 programmable output relays, 1xRS232 serial output for printer or remote control panel, 2 programmable inputs. The panel can be set by keyboard or software. Needs 2 internal batteries 12V/7Ah. EN54-2, EN54-4, CE according to CPD



TELEHEPHAIS 128

SOFTWARE PROGRAMMING TOOL for HEPHAIS 128, uploading/downloading

R7P2



7 RELAY CARD, NO-NC 30V/1A, to be plugged inside the panel, serial communication, permits to repeat states of the panel on 7 relays

R12P2



12 RELAY CARD, NO-NC 30V/1A, to be plugged inside the panel, serial communication, permits to repeat states of the panel on 12 relays

ALPHA RE



REMOTE USER INTERFACE PANEL with serial 485 connection, alphanumeric display LCD 160 characters and keyboard

From 1 to 400 addresses

HEPHAIS 1600 NE

Options



HEPHAIS 1600 NE

INTELLIGENT/INTERACTIVE COMPACT CONTROL PANEL, NOT EXPANDABLE, 400 ADDRESSES, 2 master loops or 4 spur circuits (open circuit with max 32 addresses), 1000 ZONES, 2700 memory events, 2 monitored sounders lines + 3 programmable output relays, 1xRS232 serial output for printer and 1xRS485 serial output for remote control panel, 4 programmable inputs, RS422 JBUS monitoring output, needs 2 internal batteries 12V/12Ah. EN54-2, EN54-4, CE according to CPD



TELEHEPHAIS 1600

SOFTWARE PROGRAMMING TOOL for HEPHAIS 1600

R7P2



7 RELAY CARD, NO-NC 30V/1A, to be plugged inside the panel, serial communication, permits to repeat states of the panel on 7 relays

R12P2



12 RELAY CARD, NO-NC 30V/1A, to be plugged inside the panel, serial communication, permits to repeat states of the panel on 12 relays

C20R



20 RELAY CARD, NO-NC 30V/1A, to be plugged inside the panel, serial communication, permits to repeat states of the panel on 20 relays

4ISOL



SPLITTING MASTER LOOP CARD, permit to split one loop up to 4 isolated loops to be plugged inside the panel and completed with ICC05 (one for each split)

X4EVAC



4 MONITORED WAYS SOUNDER CIRCUIT extension board, permits to multiply 1 sounder circuit in 4 activated simultaneously, to be plugged inside the panel

ALPHA RE



REMOTE USER INTERFACE PANEL with serial 485 connection, alphanumeric display LCD 160 characters and keyboard



INTELLIGENT/INTERACTIVE PANELS AND DETECTORS

PANELS

From 1 to 1600 addresses

HEPHAIS 1600

Options



HEPHAIS 1600-400/L

MODULAR INTELLIGENT/INTERACTIVE FIRE CONTROL PANEL MAX 1600 POINTS, 16 LOOPS - supplied as standard for 400 points on 2 master loops (max 200 addresses / loop) or 4 spur circuits, expandable up to 7 x MG2B (loop boards), EN54-2, EN 54-4, **in large box with integrated front panel**, 1000 zones, 2700 memory events, 2 monitored sounders lines + 3 programmable output relays, 1xRS232 serial output for printer and 1xRS485 serial output for remote control panel, 4 programmable inputs, RS422 JBUS monitoring output, networkable with MGNET board. Needs 2 internal batteries 12V/17Ah. EN54-2, EN54-4, CE according to CPD



HEPHAIS 1600-400/S

MODULAR INTELLIGENT/INTERACTIVE FIRE CONTROL PANEL MAX 1600 POINTS, 16 LOOPS - supplied as standard for 400 points on 2 master loops (max 200 addresses/loop) or 4 spur circuits, expandable up to 7 x MG2B (loop boards), EN54-2, EN 54-4, **in small box with integrated front panel**, 1000 Zones, 2700 memory events, 2 monitored sounders lines + 3 programmable output relays, 1xRS232 serial output for printer and 1xRS485 serial output for remote control panel, 4 programmable inputs, RS422 JBUS monitoring output, networkable with MGNET board. Needs 2 internal batteries 12V/12Ah. EN54-2, EN54-4, CE according to CPD

MG2B



EXTENSION MODULE 2 LOOPS (max 200 points per loop) or 4 spur circuits (max 32 points per circuit) to be plugged inside the panel

MGNET



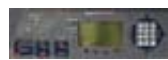
NETWORK CARD, must be plugged in each panel for network application, network done with RS485 redundant connection

IE2M



IE2M is an extension board with connectors allowing to connect from 2 to 4 MG2B. This board permits to expand the panel from 10 to 16 loops. Necessary if more than 10 loops needed.

RF H 1600



USER INTERFACE FRONT PANEL (command and control) with alphanumeric display 160 characters and keyboard, 19 inches, 3U, can be integrated in cabinet or in CO3U console

CO3U



PLASTIC BOX CONSOLE for RFH 1600 front panel

ALPHA RE



REMOTE USER INTERFACE PANEL with serial connection, alphanumeric display LCD 160 characters and keyboard

R7P2



7 RELAY CARD, NO-NC 30V/1A, to be plugged inside the panel, serial communication, permits to repeat states of the panel on 7 relays

R12P2



12 RELAY CARD, NO-NC 30V/1A, to be plugged inside the panel, serial communication, permits to repeat states of the panel on 12 relays



INTELLIGENT/INTERACTIVE PANELS AND DETECTORS

PANELS

From 1 to 1600 addresses



HEPHAIS 1600-400/L BB

MODULAR INTELLIGENT/INTERACTIVE FIRE CONTROL PANEL MAX 1600 POINTS, 16 LOOPS - supplied as standard for 400 points on 2 master loops (max 200 addresses/loop) or 4 spur circuits, expandable up to 7 x MG2B (loop boards), EN54-2, EN 54-4, **in large box without front panel**, 1000 Zones, 2700 memory events, 2 monitored sounders lines + 3 programmable output relays, 1xRS232 serial output for printer and 1xRS485 serial output for remote control panel, 4 programmable inputs, RS422 JBUS monitoring output, networkable with MGNET board. Needs 2 internal batteries 12V/17Ah. EN54-2, EN54-4, CE according to CPD



HEPHAIS 1600-400/S BB

MODULAR INTELLIGENT/INTERACTIVE FIRE CONTROL PANEL MAX 1600 POINTS, 16 LOOPS - supplied as standard for 400 points on 2 master loops (max 200 addresses/loop) or 4 spur circuits, expandable up to 7 x MG2B (loop boards), EN54-2, EN 54-4, **in small box without front panel**, 1000 Zones, 2700 memory events, 2 monitored sounders lines + 3 programmable output relays, 1xRS232 serial output for printer and 1xRS485 serial output for remote control panel, 4 programmable inputs, RS422 JBUS monitoring output, networkable with MGNET board. Needs 2 internal batteries 12V/12Ah. EN54-2, EN54-4, CE according to CPD



HEPHAIS 1600-400 LPM

MODULAR INTELLIGENT/INTERACTIVE FIRE CONTROL PANEL MAX 1600 POINTS, 16 LOOPS - supplied as standard for 400 points on 2 master loops (max 200 addresses/loop) or 4 spur circuits, expandable up to 7 x MG2B (loop boards), EN54-2, EN 54-4, **in large metallic with integrated front panel**, 1000 Zones, 2700 memory events, 2 monitored sounders lines + 3 programmable output relays, 1xRS232 serial output for printer and 1xRS485 serial output for remote control panel, 4 programmable inputs, RS422 JBUS monitoring output, networkable with MGNET board. Needs 2 internal batteries 12V/17Ah. EN54-2, EN54-4, CE according to CPD



TELEHEPHAIS 1600

SOFTWARE PROGRAMMING TOOL for HEPHAIS 1600

C20R



20 RELAY CARD, NO-NC 30V/1A, to be plugged inside the panel, serial communication, permits to repeat states of the panel on 20 relays

X4EVAC



4 MONITORED WAYS SOUNDER CIRCUIT extension board, permits to multiply 1 sounder circuit in 4 activated simultaneously, to be plugged inside the panel

IMP



INTERNAL SERIAL FLUSH MOUNTED PRINTER can be directly mounted in metallic box of HEPHAIS 1600 or through SUPIMP piece for plastic box

SUPIMP



MOUNTING KIT to flushmount IMP printer in LARGE PLASTIC box of HEPHAIS 1600

IMP/E



EXTERNAL SERIAL PRINTER, dimensions 165x135x50mm

KCT10



PACK OF 10 THERMIC PAPER ROLLS

4ISOL



SPLITTING MASTER LOOP CARD, permits to split one loop up to 4 isolated loops to be plugged inside the panel and completed with ICC05 (one for each split)





INTELLIGENT/INTERACTIVE PANELS AND DETECTORS

INTELLIGENT FIRE DETECTORS

05 range

Bases

● OA05



INTELLIGENT/INTERACTIVE OPTICAL SMOKE DETECTOR, microprocessor based, 1 programmable remote alarm indicator output, 8 levels sensitivity setting, EN54-7 CE according to CPD

● TA05



INTELLIGENT/INTERACTIVE HEAT DETECTOR, static or/and rate of rise, microprocessor based, 1 programmable remote alarm indicator output, 6 levels sensitivity setting, EN54-5, CE according to CPD

● MA05



INTELLIGENT/INTERACTIVE OPTICAL-HEAT DETECTOR, multicriteria or combined, microprocessor based, 1 programmable remote alarm indicator output, 8 levels sensitivity setting, EN54-7, CE according to CPD

● S05SE



UNIVERSAL BASE WITH STICK ADDRESS SOCKET for 05-range conventional and addressable detectors

● PES05



FLUSHMOUNTING PIECE FOR BASE (Base not included), permits to flushmount a 05 range detector.

● SOUND05+S05



BASE WITH INTERNAL SOUNDER 95db @ 1m, Possibility to select 6 tones and 3 intensity levels, EN54-3, CE according to CPD.

● ICC05



PLUG IN ISOLATOR BOARD for 05 detectors (to be plugged in S05SE)

● STRAPP



PLUG IN CONNECTION BOARD for cable $\geq 1,5\text{mm}^2$ (to be plugged in S05SE)

● R05



RELAY BOARD (12V or 24V) for 05 detectors (to be plugged in S05), NO-NC 30V/1A

● CS05



PROTECTION PLATE for S05 base, permits to cover a base without detector

● BRI/EM +S05



Universal base with GLANDS HOLE for 05 range, base with tubes connections

● BRI + S05



WATERPROOF universal base with glands for 05 range (IP65), base with tubes connections supplied with glands

● GAV



ANTIVANDALISM protection grid

Addressable flame detector

● IR95 + S95



ANALOGUE/ADDRESSABLE INFRARED FLAME DETECTOR, microprocessor based, 1 programmable remote alarm indicator output, EN54-10 CE according to CPD



INTELLIGENT/INTERACTIVE PANELS AND DETECTORS

ADDRESSABLE MANUAL CALL POINTS

05 range

Accessories



- **DMA05**
ADDRESSABLE MANUAL CALL POINT resettable with key without breaking glass, integrated isolator, red colour, EN54-11, EN54-17, CE according to CPD



- **DMA05R**
ADDRESSABLE MANUAL CALL POINT resettable with key without breaking glass, integrated isolator and programmable relay output, red colour, EN54-11, EN54-17, EN54-18 CE according to CPD

PEDM

PLASTIC FRAME for flush mounting MCP



VPDM

TRANSPARENT LIFT-UP protective cover for MCP, permits a double action



KCTDM

KIT OF 10 RESET KEYS for 05 MCP



Addressable waterproof manual call point



- **STS6535**
WATERPROOF IP65 HOUSING BOX for conventional and addressable manual call point with reset (call point not included)

LOOP SOUNDERS



- **AVSA05/W**
ADDRESSABLE HIGH POWERED PIEZOELECTRIC SOUNDER for indoor use (white colour), integrated isolator, possibility to select 6 tones, 95db@1m, lateral hearings, loop powered, for HEPHAIS range



- **AVSA05/R**
ADDRESSABLE HIGH POWERED PIEZOELECTRIC SOUNDER for indoor use (red colour), integrated isolator, possibility to select 6 tones, 95db@1m, lateral hearings, loop powered, for HEPHAIS range





INTELLIGENT/INTERACTIVE PANELS AND DETECTORS

INTERFACE LOOP UNITS



● MAY1

ADDRESSABLE ZONE INTERFACE MODULE with backbox, for max 32 conventional points



● MBA95

ADDRESSABLE ZONE INTERFACE MODULE with backbox, for max 32 conventional points, isolator integrated, opto-isolated on the secondary line, EN54-17, EN54-18, EN54-13 CE according to CPD



● ETC05-B

ADDRESSABLE INPUT/OUTPUT MODULE with backbox, isolator integrated, NO or NC monitoring for input , relay output NO-NC 30V/1A, EN54-17, EN54-18 CE according to CPD (exists also in RAIL DIN version)



● ET4C05-B

ADDRESSABLE 4 INPUT/OUTPUT MODULE with backbox, isolator integrated, NO or NC monitoring for input , relay output NO-NC 30V/1A, EN54-17, EN54-18 CE according to CPD



● EDL

ADDRESSABLE 2 MONITORED INPUT + 1 MONITORED LINE OUTPUT permits to manage 2 monitored inputs and use monitored sounders line for outputs, EN54-17, EN54-18, CE according to CPD

● ED4L

ADDRESSABLE 8 MONITORED INPUT + 4 MONITORED LINE OUTPUT permits to manage 8 monitored inputs and use monitored sounders line for outputs, EN54-17, EN54-18, CE according to CPD



● IAT16R/D

ADDRESSABLE 16 OUTPUT RELAY MODULE on rail din, relay output NO-NC 30V/1A



● IAT16E/D

ADDRESSABLE 16 MONITORED INPUT MODULE on rail din

PROGRAMMING AND MAINTENANCE TOOL



● MINIBT05

Portable tool for programming / test / maintenance of detectors and addressable devices (for 05 range)



SPECIFIC PRODUCTS GENERAL VIEW

EXPLOSION HAZARD AREA PRODUCTS

ADDRESSABLE SYSTEM

HEPHAIS 128
From 1 to 128 addresses

HEPHAIS 1600 NE
From 1 to 400 addresses

HEPHAIS 1600
From 1 to 1600 addresses



CONVENTIONAL SYSTEM

ALPHA 4/8/12 + EX4A4Ex
From 4 zones standard expandable to 12 zones + Ex 4 zones expansion board

Sounder line

HAZARDEOUS AREA

E.O.L resistor

Detection line

HAZARDEOUS AREA

E.O.L resistor

HAZARDEOUS AREA

VIREX + SVEX

VTEX + SVEX

VOEX + SVEX

DMEX

E.O.L resistor

HAZARDAEOUS AREA

AVSEx

AVSEx

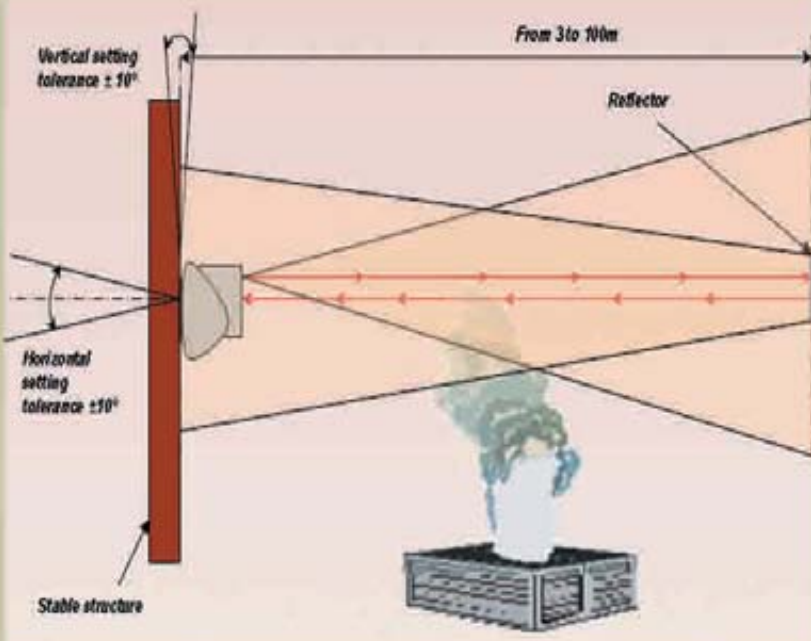
E.O.L resistor

Sounder line or SBEX BZ2

SBEX BZ1
Safety barrier or SBEX BZ2

SBEX BZ3
Safety barrier or SBEX BZ2

LINEAR SMOKE DETECTOR



- 9 reflectors 10cm x 10cm are supplied with the DLFBc :
- REFLECTOR 10cm x 10cm distance : from 3 to 60 meters
 - REFLECTOR 20cm x 20cm distance : from 80 to 80 meters
 - REFLECTOR 30cm x 30cm distance : from 80 to 100 meters

DLFBc
Beam detector

BEAM-BR
Remote box

DETEL
Remote control with display and keypad

AIR SAMPLING DETECTION

CONVENTIONAL AIR SAMPLING DETECTION

ALPHA 4/8/12
From 4 zones standard
expandable to 12 zones



ADDRESSABLE AIR SAMPLING DETECTION

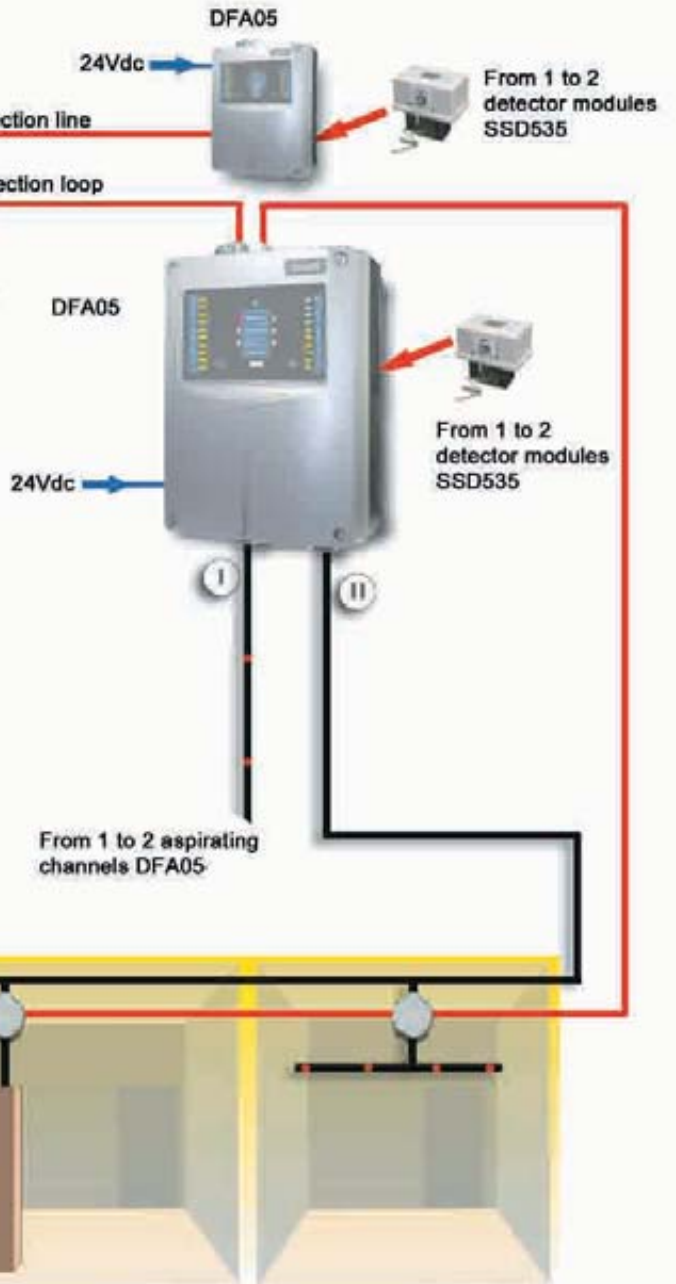
HEPHAIS 128
From 1 to 128
addresses



HEPHAIS 1600 NE
From 1 to 400 addresses



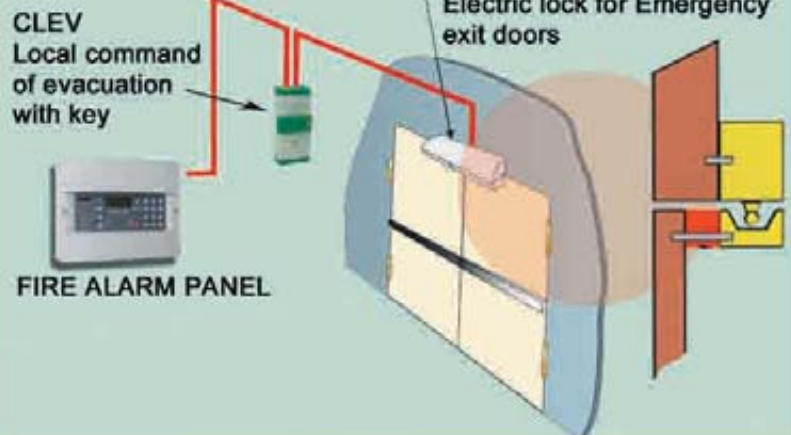
HEPHAIS 1600
From 1 to 1600 addresses



VOICE EVACUATION



EMERGENCY DOORS





LINEAR SMOKE DETECTORS

DLFB

Accessories



● **DLFBe I**
INTELLIGENT INTERACTIVE BEAM DETECTOR (loop powered) for linear smoke detection supplied with reflector for distance from 3 up to 100 meters, integrated isolator, visible ray for alignment, EN54-12, CE according to CPD

● **DLFBe C**
CONVENTIONAL BEAM DETECTOR, 2 wires (line powered) for linear smoke detection supplied with reflector for distance from 3 up to 100 meters, visible ray for alignment, EN54-12, CE according to CPD

● **DLFBe R**
RELAY BEAM DETECTOR, for linear smoke detection supplied with reflector for distance from 3 up to 100 meters, NO-NC ALARM, NO-NC FAULT, visible ray for alignment, EN54-12, CE according to CPD

DETTTEL

REMOTE CONTROL WITH DISPLAY AND KEYPAD for DLFBe, permits to adjust the alignment and program the beam



BEAM-BR

REMOTE BOX FOR BEAM, permits remotely to enable/disable, reset, can be plugged on the remote control DETTEL, 4 wires connections to the beam



BEAM-KIT4CC

SUNSHIELD PROTECT FOR REFLECTOR, supplied for 4 reflectors 10x10 reflectors, permits to protect against sun rays



AIR SAMPLING DETECTION

WITH HIGH SENSITIVITY DETECTORS

Detector modules



● **DFA05-1C-B**
CONVENTIONAL SINGLE CHANNEL HIGH SENSITIVITY BASE DETECTOR for one sampling tube with smoke level indicator, to be completed with one detector module SSD, EN54-20 CE according to CPD

● **DFA05-2C-B**
CONVENTIONAL DUAL CHANNEL HIGH SENSITIVITY BASE DETECTOR, for one or two sampling tubes with smoke level indicator, to be completed with one or two detectors modules SSD, EN54-20 CE according to CPD

● **DFA05-1C**
INTELLIGENT/INTERACTIVE SINGLE CHANNEL HIGH SENSITIVITY BASE DETECTOR, for one sampling tube, to be completed with one detector module SSD, EN54-20 CE according to CPD

● **DFA05-2C**
INTELLIGENT/INTERACTIVE DUAL CHANNEL HIGH SENSITIVITY BASE DETECTOR, for one or two sampling tubes, to be completed with one or two detectors modules SSD, EN54-20 CE according to CPD

SSD 535-2

HIGH SENSITIVITY SMOKE DETECTOR MODULE with alarm sensitivity range from 0,01%/m to 10%/m to be plugged in DFA05



SSD 535-3

HIGH SENSITIVITY SMOKE DETECTOR MODULE with alarm sensitivity range from 0,002%/m to 10%/m to be plugged in DFA05



RIM35

RELAY INTERFACE MODULE with 5 programmable relays, NO-NC 30V/1A to be plugged in DFA05



MCM35

SD-1GO MEMORY CARD MODULE to be plugged in DFA05 permits to record operating data and store memory events





AIR SAMPLING DETECTION

PROGRAMMING SOFTWARE FOR DFA05



● SAMPLING PIPE CONFIG

SYSTEM DESIGN SOFTWARE permits to define the network pipe

● DFA05 CONFIG

PROGRAMMING SOFTWARE permits to download/upload data configuration through USB cable (not supplied)

FIRE LOCALISATION DEVICE

● Options



● TP2S

FIRE LOCALISATION DEVICE HEAD , this device connected to aspirating pipe with high sensitive detector (DFA05) permits to address the air sampling point(s). Detector with double detection, led integrated P65. To be completed with SP2S



● SP2S

FILE LOCALISATION DEVICE BASE for wire connection to the fire alarm panel and connection for the aspirating type.IP65.To be completed with TP2S

● R05



RELAY BOARD (12V or 24V) for 05 detectors (to be plugged in S05), NO-NC 30V/1A

FILTERS



● FBS 25PC

Filter Box Small Ø 25 mm, PC

● Filter mat-S

Filter Mat Small for FBS 25 PC



● FBL 25PC

Filter Box Large Ø 25 mm, PC

● Filter mat-L

Filter Mat Small for FBS 25 PC



● MV 25 ABS

Manual ball valve Ø 25 mm, ABS



AIR SAMPLING DETECTION

ASPIRATING PIPES



● **TU25RF**
FIREPROOF AIR SAMPLING PIPE 25mm
(3m length), red colour (Qmin =30)



● **EN25RF**
FIREPROOF STRAIGHT SOCKET 25mm,
red colour, (Qmin =20)



● **TE25RF**
FIREPROOF EQUAL TEE PIECE for 25mm
tube, red colour, (Qmin =10)



● **T 25/8**
FIREPROOF EQUAL TEE PIECE for 8mm
capillary tube or sample point, red co-
lour, (Qmin =10)



● **TT25RF**
FIREPROOF END CAP, for 25mm tube ,
red colour, (Qmin =10)



● **C90RF**
FIRE PROOF 90° ELBOW, for 25mm tube,
red colour, (Qmin =5)



● **CF70**
FLEXIBLE ELBOW for 25mm tube,
(Qmin =4)



● **C45RF**
FIRE PROOF 45° ELBOW, for 25mm tube,
red colour, (Qmin =5)



● **TF.10**
FLEXIBLE TUBE 1m length



● **TC.8**
CAPILLARY TUBE (10mm OD; 8mm ID)
(100m roll)



● **ABR**
FIRE PROOF PIPE CLIP for 25mm tube, red
colour, (Qmin =50)



● **UTRF**
FIREPROOF UNION TUBE for 25mm tube, red
colour, (Qmin =10)



● **PMTU**
SAMPLE POINT 8mm



● **PMC**
CONIC SAMPLE POINT, (Qmin =10)



● **PMPT**
PLATE SAMPLE POINT vith nut, (Qmin =10)



● **PMP**
PLATE SAMPLE POINT vith screws, (Qmin =10)



● **PMC/8**
SAMPLE POINT for capillary tube, (Qmin =10)



● **PCM/10**
RAISE FOR CLIP , raises for 17mm, (Qmin =10)



● **PRPM**
EXTENSION LEAD for sample point, (Qmin =10)



● **TL**
WATERPROOF ENDCAP, (Qmin =10)



EXPLOSION HAZARD AREA PRODUCTS



- **VIREX**
CONVENTIONAL INFRARED FLAME DETECTOR - Ex version, ATEX II 1G Eex ia IIC T6, EN54-10



- **VOEX**
CONVENTIONAL OPTICAL SMOKE DETECTOR - Ex version, ATEX II 1G Eex ia IIC T6 EN54-7



- **VTEX**
CONVENTIONAL RATE OF RISE + FIXED HEAT DETECTOR, Ex version, ATEX II 1G Eex ia IIC T6, EN54-5



- **SVEX**
MOUNTING BASE- anti-static design - Ex version



- **DMEX**
CONVENTIONAL MANUAL CALL POINT with reset key , Ex version



- **AVSEX**
INTRINSICALLY SAFE SOUNDER-EX- 100db, to be used with SBEX BZ3



- **MBA95Ex**
ADDRESSABLE ZONE INTRINSICALLY INTERFACE MODULE with backbox, for max 10 conventional EEX points, isolator integrated, opto-isolated on the secondary line, EN54-17, EN54-18, EN54-13 CE according to CPD



- **SBEX BZ1**
SAFETY BARRIER dedicated for intrinsically safe detectors and call points

- **SBEX BZ2**
SAFETY BARRIER dedicated for intrinsically safe detectors and call points, **opto-isolated**



- **SBEX BZ3**
SAFETY BARRIER dedicated exclusively for intrinsically safe sounders



WIRELESS SOLUTIONS



● OA05-W

WIRELESS OPTICAL SMOKE DETECTOR, 1 remote led output, EN54-7 , EN54-25, CE according to CPD



● DMA05-W

WIRELESS MANUAL CALL POINT, EN54-11 , EN54-25, CE according to CPD



● OI05

MONITORING MODULE can be connected on HEPHAIS 1600 ,1 remote led output, monitoring device of wireless equipments EN54-17, EN54-18, EN54-25, CE according to CPD



● TELEWIRELESS

SOFTWARE PROGRAMMING TOOL for WIRELESS SOLUTIONS



ACCESSORIES FOR FIRE SYSTEMS



● **IND05**
REMOTE ALARM INDICATOR angle of vision = 180°

● **IND05E**
WATERPROOF REMOTE ALARM INDICATOR angle of vision = 180°



● **AVS 2000/W**
HIGH POWERED PIEZOELECTRIC SOUNDER for INDOOR use (white colour), possibility to select 6 tones, lateral hearings, 95db@1m, EN54-3 according to CPD



● **AVS 2000/R**
HIGH POWERED PIEZOELECTRIC SOUNDER for INDOOR use (red colour), possibility to select 6 tones, 95db@1m, lateral hearings, EN54-3 according to CPD



● **AVSU EFP**
HIGH POWERED PIEZOELECTRIC SOUNDER for OUTDOOR , 114db@1m, IP65, EN 54-3 according to CPD



● **AVS2000FLASH**
COMBINED SOUNDER AND FLASH for INDOOR use, 95db@1m, EN54-3 according to CPD



● **AVSFLASH**
XENON BEACON high luminosity with 360° angle ,from 12Vdc to 48Vdc



● **4485**
COMBINED SOUNDER AND FLASH for OUTDOOR use (red colour), IP65, 101db@1m, EN54-3 according to CPD



● **531024-1019**
XENON OUTDOOR BEACON high luminosity with 360° angle ,from 9Vdc to 60Vcc, IP65



● **S/EKO F24**
SELF POWERED OUTDOOR SOUNDER WITH FLASH, IP34, 24 Vdc



● **P7232**
OPTICAL ACOUSTIC ALARM PANEL WITH BUZZER lighting with high luminosity LED, 12V/24Vdc, IP55

● **P7236**
SELF-POWERED OPTICAL ACOUSTIC ALARM PANEL WITH BUZZER lighting with high luminosity LED, 12V/24Vdc, IP55

● **P7264**
OPTICAL ACOUSTIC ALARM PANEL WITH SOUNDER, lighting with high luminosity LED IP55

● **P7266**
SELF-POWERED OPTICAL ACOUSTIC ALARM PANEL WITH SOUNDER, lighting with high luminosity LED IP55

● **P7265**
OPTICAL ACOUSTIC ALARM PANEL WITH SOUNDER, lighting with high luminosity LED, 12V/24Vdc, IP43

● **P7268**
SELF-POWERED OPTICAL ACOUSTIC ALARM PANEL WITH SOUNDER, lighting with high luminosity LED IP43

● **P7260**
OPTICAL ACOUSTIC ALARM PANEL WITH SOUNDER, lighting with high luminosity LED, 12V/24Vdc, IP65





ACCESSORIES FOR FIRE SYSTEMS



- **4476-24**
RED INTERNAL BELL, diameter 150mm, 93 db, 24Vdc



- **4479-24**
RED EXTERNAL BELL, 6 inches diameter ,93 db, 24Vdc



- **ALTO-DA1B00X**
INFORMATION AND DIRECTION LIGHTING, IP40, sustained double sided 3 hours, wall mounted (exists also ceiling mounted) , operating voltage 230VAC/50hz, IP40



- **MARINA-DA3B0X**
EMERGENCY LIGHT NON-MAINTAINED SINGLE SIDED 3 hours (exists also in sustained), IP65, operating voltage 230VAC/50HZ



- **FENER-2210107X**
EMERGENCY LIGHT 1 hour (exists also in 3 hours), 2 halogen lamps 20W (exists also with 1), 12V 7Ah battery



- **VTR0241210**
ELECTROMAGNETIC DOOR release unit in metal case, 50daN, 24V

- **1360**
ELECTROMAGNETIC DOOR release unit in metal case, 100daN, 24V



- **1388A**
ELECTROMAGNETIC DOOR release unit in metal case, 300kg/250daN, 24V



- **1450**
FLOODING AND MOISTURE DETECTOR with free voltage contact relay, 12/24Vdc



- **2450**
IP 67 LIQUID DETECTOR with free voltage contact relay, 12/24Vdc



- **DA4**
PHONE DIALER with 4 inputs and 4 voice messages



- **GSM 31 GPRS**
GSM/GPRS communicator (with metal enclosure, GSM antenna and power supply)



- **USB/232**
CONVERTER MODULE USB/232



MONITORING SOFTWARE

MAPSKITALPHA-HEPHAIS

Options



MAPSKITALPHA-HEPHAIS

BASE REMOTE MAP MONITORING SOFTWARE for 8 panels (to be completed with MAPSPPLUS), compatible with addressable ALPHA 500/1000 or HEPHAIS 1600 panels

MAPSPPLUSALPHA-HEPHAIS

ADDITIONAL LICENSE for 1 panel management, compatible with addressable ALPHA 500/1000 or HEPHAIS 1600 panels

MAPSKITALPHA-HEPHAIS FOR NETWORK

Options



MAPSKITALPHA-HEPHAIS NET

NET VERSION BASE REMOTE MAP MONITORING SOFTWARE (to be completed with MAPSPPLUSALPHANET), compatible with addressable ALPHA 500/1000 or HEPHAIS 1600 panels

MAPSPPLUSALPHA-HEPHAIS NET

NET VERSION ADDITIONAL LICENSE for management of 1 panel, compatible with addressable ALPHA 500/1000 or HEPHAIS 1600 panels

MAPSPPLUSALPHA-HEPHAIS NET4

NET VERSION ADDITIONAL LICENSE for management of 4 panels, compatible with addressable ALPHA 500/1000 or HEPHAIS 1600 panels

JBUS/IP

TCPIP INTERFACE for analogue panels (MA53 422/232 converter + Procontroller 232/TCPIP converter)

JBUS/IP/4

TCPIP interface for 4 analogue panels (MA53 422/232 converter + Procontroller 232/TCPIP converter)

CONVERTERS

Serial converter



MA53

CONVERTER MODULE RS232/RS422 with power supply

Optic fiber converter



CONCUFI

CONVERTER MODULE RS422/RS485/RS232 to optic fiber max distance 6km, multimode, rail din enclosure, 7Vdc to 60Vdc power



HEPHEA POWER SUPPLY RANGE

● HEPHEA 242

POWER SUPPLY IN BOX 24V-2A, including output relays for mains fault and battery fault, metallic box 405x385x160mm, EN54-4 (A2), CE according to CPD



● HEPHEA 244

POWER SUPPLY IN BOX 24V-4A, including output relays for mains fault and battery fault, metallic box 405x385x160mm, EN54-4 (A2), CE according to CPD

● HEPHEA 248

POWER SUPPLY IN BOX 24V-8A, including output relays for mains fault and battery fault, metallic box 405x385x160mm, EN54-4 (A2), CE according to CPD



● HEPHEA 2412

POWER SUPPLY IN BOX 24V-12A, including output relays for mains fault and battery fault, metallic box 405x385x160mm, EN54-4 (A2), CE according to CPD

● AL124H-CP01

POWER SUPPLY IN PLASTIC BOX 24V-1A, including output relays for mains fault and battery fault



● AL424H-CM01E

POWER SUPPLY IN METALLIC BOX 24V-4A, 265x405x140mm, including output relays for mains fault and battery fault

● AL1024B-CM03

POWER SUPPLY IN METALLIC BOX 24V-10A, 405x390x165mm, including output relays for mains fault and battery fault

RACK VERSION

● AU224/A2/R

POWER SUPPLY IN RACK VERSION 24V-2A, including output relays for mains fault and battery fault, 19inches, 3U



● AU424/A2/R

POWER SUPPLY IN RACK VERSION 24V-4A, including output relays for mains fault and battery fault, 19inches, 3U



GAS DETECTION

CONVENTIONAL GAS DETECTORS

Accessories

● **GD100C**
 CONVENTIONAL METHANE GAS DETECTOR, CH₄, IP55, can be directly connected on ALPHA panel, alarm and prealarm resistors integrated, needs external power supply

● **GD102C**
 CONVENTIONAL PETROL STEAM GAS DETECTOR, IP55, can be directly connected on ALPHA panel, alarm and prealarm resistors integrated, needs external power supply

● **GD104C**
 CONVENTIONAL HYDROGEN GAS DETECTOR, H₂, IP55, alarm and prealarm resistors integrated, needs external power supply

● **GD105C**
 CONVENTIONAL LIQUID PROPANE GAS DETECTOR, LPG, IP55, alarm and prealarm resistors integrated, needs external power supply

● **GD106C**
 CONVENTIONAL PROPANE GAS DETECTOR, C₃H₈, IP55, alarm and prealarm resistors integrated, needs external power supply

● **GD109C**
 CONVENTIONAL ACETYLENE GAS DETECTOR, C₂H₂, IP55, alarm and prealarm resistors integrated, needs external power supply

● **GD113C**
 CONVENTIONAL CARBON MONOXIDE GAS DETECTOR, CO, IP55, ELECTROCHEMICAL CELL, alarm and prealarm resistors integrated, needs external power supply



● **GDREL**
 PLUG-IN 3 RELAY CARD, NO-NC 30V/1A, to be plugged inside the detector, permits to repeat ALARM, PREALARM, FAULT of the detector



● **DETEL**
 REMOTE CONTROL WITH DISPLAY AND KEYPAD for GAS DETECTORS, permits to read level and data of detectors (sensitivity, thresholds...)



● **P7150V**
 TEST KIT GAS DETECTORS (valve + adapter)



● **MEGAS**
 METHANE GAS TEST BOTTLE, 40% L.I.E, 12 liters



● **COGAS**
 CARBON MONOXIDE GAS TEST BOTTLE, 250ppm, 12 liters



● **VPGAS**
 PETROL STEAM GAS TEST BOTTLE, 40% L.I.E, 12 liters





GAS DETECTION

ADDRESSABLE GAS DETECTORS

Accessories

● GD100A

ADDRESSABLE METHANE GAS DETECTOR, CH₄, IP55, can be directly connected on HEPHAIS loops, integrated isolator, needs external power supply

● GD102A

ADDRESSABLE PETROL STEAM GAS DETECTOR, IP55, can be directly connected on HEPHAIS loops, integrated isolator, needs external power supply

● GD104A

ADDRESSABLE HYDROGENE GAS DETECTOR, H₂, IP55, can be directly connected on HEPHAIS loops, integrated isolator, needs external power supply

● GD105A

ADDRESSABLE LIQUID PROPANE GAS DETECTOR, LPG, IP55, can be directly connected on HEPHAIS loops, integrated isolator, needs external power supply

● GD106A

ADDRESSABLE PROPANE GAS DETECTOR, C₃H₈, IP55, can be directly connected on HEPHAIS loops, integrated isolator, needs external power supply

● GD109A

ADDRESSABLE ACETILENE GAS DETECTOR, C₂H₂, IP55, can be directly connected on HEPHAIS loops, integrated isolator, needs external power supply

● GD113A

ADDRESSABLE CARBON MONOXIDE GAS DETECTOR, CO, IP55, ELECTROCHEMICAL CELL, can be directly connected on HEPHAIS loops, integrated isolator, needs external power supply



● DETTEL

REMOTE CONTROL WITH DISPLAY AND KEYPAD for GAS DETECTORS, permits to read the level and data of the detector (sensitivity, thresholds...)



● P7150V

TEST KIT GAS DETECTORS (valve + adapter)



● MEGAS

METHANE GAS TEST BOTTLE, 40% L.I.E, 12 liters



● COGAS

CARBON MONOXID GAS TEST BOTTLE, 250ppm, 12 liters



● VPGAS

PETROL STEAM GAS TEST BOTTLE, 40% L.I.E, 12 liters





GAS DETECTION

EXPLOSION PROOF GAS DETECTION

Flammable gas

- **SD2243ME**
Exd METHANE GAS DETECTOR, 0-100% LEL, ex 2GD Ex d IIC T6 Ex tD A21 IP65 T 85°C
- **SD2243VB**
Exd PETROL STEAM GAS DETECTOR, 0-100% LEL, ex 2GD Ex d IIC T6 Ex tD A21 IP65 T 85°C
- **SD2243BU**
Exd BUTANE GAS DETECTOR, 0-100% LEL, ex 2GD Ex d IIC T6 Ex tD A21 IP65 T 85°C
- **SD2243PR**
Exd PROPANE GAS DETECTOR, 0-100% LEL, ex 2GD Ex d IIC T6 Ex tD A21 IP65 T 85°C
- **SD2243GP**
Exd LPG GAS DETECTOR, 0-100% LEL, ex 2GD Ex d IIC T6 Ex tD A21 IP65 T 85°C
- **SD2243H2**
Exd HYDROGEN GAS DETECTOR, 0-100% LEL, ex 2GD Ex d IIC T6 Ex tD A21 IP65 T 85°C
- **SD2244AM**
Exd AMMONIAC GAS DETECTOR, 0-100% LEL, ex 2GD Ex d IIC T6 Ex tD A21 IP65 T 85°C



Toxic gas

- **SD2245O2**
Exd OXYGEN GAS DETECTOR, 0-200 ppm, ex 2GD Ex d IIC T6 IP65
- **SD2246AM**
Exd AMMONIAC GAS DETECTOR, 0-200 ppm, ex 2GD Ex d IIC T6 IP65
- **SD2247AM**
Exd AMMONIAC GAS DETECTOR, 0-1000 ppm, ex 2GD Ex d IIC T6 IP65



Accessories

ST3REL

PLUG-IN 3 RELAY CARD, NO-NC 30V/1A , to be plugged inside the detector, permits to repeat ALARM, PREALARM, FAULT of the detector



ZMCAP

Calibration adapter



ST3/CKD

Calibration keypad to adjust the detector zero and span values





MARINE

ADDRESSABLE PANELS

From 1 to 128 addresses



HEPHAIS 128-M

INTELLIGENT/INTERACTIVE COMPACT CONTROL PANEL, 128 ADDRESSES, 2 loops or 4 spur circuits (open circuit with max 32 addresses), 99 ZONES, 1000 memory events, 1 monitored sounders line + 5 programmable output relays, 1xRS232 serial output for printer or remote control panel, 2 programmable inputs. The panel can be set by keyboard or software. Needs 2 internal batteries 12V/7Ah. EN54-2, EN54-4, CE according to CPD, Marine Bureau veritas approved

From 1 to 1600 addresses



HEPHAIS 1600-400/LPM-M

MODULAR INTELLIGENT/INTERACTIVE FIRE CONTROL PANEL MAX 1600 POINTS, 10 LOOPS - supplied as standard for 400 points on 2 loops (max 200 addresses/loop) or 4 spur circuits, EN54-2, EN 54-4, in large metallic box with integrated front panel, 1000 Zones, 2700 memory events, 2 monitored sounders lines + 3 programmable output relays, 1xRS232 serial output for printer and 1xRS485 serial output for remote control panel, 4 programmable inputs, RS422 JBUS monitoring output, networkable with MGNET board. Needs 2 internal batteries 12V/17Ah. EN54-2, EN54-4, CE according to CPD, Marine Bureau veritas approved

ADDRESSABLE DETECTORS



OA05-M

INTELLIGENT/INTERACTIVE OPTICAL SMOKE DETECTOR, microprocessor based, 1 programmable remote alarm indicator output, 8 levels sensitivity setting, EN54-7 edition 2000, CE according to CPD, Marine Bureau veritas approved



TA05-M

INTELLIGENT/INTERACTIVE HEAT DETECTOR, static or/and rate of rise, microprocessor based, 1 programmable remote alarm indicator output, 6 levels sensitivity setting, EN54-5 edition 2000, CE according to CPD, Marine Bureau veritas approved



S05SE

UNIVERSAL BASE WITH STICK ADDRESS SOCKET for 05-range conventional and addressable detectors



BRI + S05

WATERPROOF universal base with glands for 05 range (IP65), base with tubes connections supplied with glands



ICC05

PLUG IN ISOLATOR BOARD for 05 detectors (to be plugged in S05SE)



DMA05-M

ADDRESSABLE MANUAL CALL POINT - resettable with key without breaking glass, integrated isolator, red colour, EN54-11, EN54-17, CE according to CPD, Marine Bureau veritas approved



ETC05-B-M

ADDRESSABLE INPUT/OUTPUT MODULE with backbox, isolator integrated, NO or NC monitoring for input, relay output NO-NC 30V/1A, EN54-17, EN54-18 CE according to CPD (exists also in RAIL DIN version), Marine Bureau veritas approved



MBA95-M

ADDRESSABLE ZONE INTERFACE MODULE with backbox, for max 32 conventional points, isolator integrated, opto-isolated on the secondary line, EN54-17, EN54-18, EN54-13 CE according to CPD, Marine Bureau veritas approved





VOICE EVACUATION SYSTEMS



● SEV-C

VOICE EVACUATION CENTRAL PANEL, manages max 8 speakers, connected to monitored sounder line or relay contact, needs 24Vdc external power supply, 30s of message + 4s of sound of sounder

SPEAKERS



● STR50

SATELLITE SPEAKER 105db, max 8 per line



● STR44

SATELLITE SPEAKER 115db, max 8 per line



● SNR35

SATELLITE SPEAKER 125db, max 4 per line

VOICE SOUNDERS



● DSV110/W

HIGH POWERED VOICE SOUNDER 100db@1m, (8s message), white colour, can be directly connected on sounder lines



● PROG DSV 110

BOARD FOR programming the voice message



ELECTRIC LOCK FOR EMERGENCY EXIT DOORS



● DS3000

ELECTRIC LOCK FOR EMERGENCY exit doors with single action



● DS3000 2VTX

ELECTRIC LOCK FOR EMERGENCY exit doors with double actions



● CLEV

LOCAL COMMAND of evacuation with key



FIRE ALARM CABLE



● S-3ANT2050

2x0,5 mm² (diam 0,8) cable , twisted with screen, polyvinylchloride rated , flame retardant, red colored (rolls by 200m)



● S-3ANT2010

2x1,00 mm² cable , twisted with screen, polyvinylchloride rated , flame retardant, red colored (rolls by 200m)

FIRE PROOF CABLE



● S-AFU2015

2x1,5 mm² cable ,insulated with flame barrier, fire resistant 750°C according to IEC60331, red colored (rolls by 200m)



MAINTENANCE EQUIPMENT

TEST AND MOUNTING TOOLS



● **3010**
Smoke detector tester



● **3015**
Aerosol bottle of 250 ml (pack of 12)



● **3053**
Heat detector tester (head and 12V controller)



● **3059**
12V charger



● **4065**
05 removal tool



● **4051**
95 removal tool

Telescopic access

Accessories



● **2001**
Telescopic access pole 2x1.50m

● **2002**
Telescopic access pole 2x2.00m

● **1001** 1.00m extension

● **1004** 1.50m extension

● **1005** 2.00m extension



MAINTENANCE EQUIPMENT

SPARE PARTS

Alpha 2

AL2BOARD

ALPHA 2 MOTHER BOARD

Alpha 4/8/12

AR4D

ALPHA 4/8/12 MOTHER BOARD

Hephais 128

MP128

HEPHAIS 128 MOTHER BOARD

Hephais 1600 NE

MB2B NE

PANEL'S MAIN CPU BOARD

ALBA150

POWER SUPPLY FOR HEPHAIS 1600

Hephais 1600

MB2B

PANEL'S MAIN CPU BOARD

ALBA150

POWER SUPPLY FOR HEPHAIS 1600



MAINTENANCE EQUIPMENT

Alpha 500/1000

● CPUB

CPU board for alpha 500/1000

● ALBA

POWER supply for ALPHA 500/1000

● MD1B05

Extension module for 4 spur circuits (max 32 points per circuit) or 2 loops (max 125 points), for 05 intelligent detectors range

● MD1B

Extension module for 4 spur circuits (max 32 points per circuit) or 2 loops (max 125 points), for 95 detectors range

● ESAL D 3U

User interface panel with alphanumeric display 160 characters and keyboard, rack mount version 19", for ALPHA 500/1000

95 serie detectors

● OA95

Analogue/addressable optical smoke detector, EN54-7

● TVA95

Analogue/addressable rate of rise + fixed heat detector, EN54-5

● TPA95

Analogue/addressable fixed heat detector, EN54-5

● OTA95

Analogue/addressable multicriteria (optical-heat) detector EN54-7

● S95

Universal base for conventional and analogue detectors

● DLFB A

ADDRESSABLE BEAM DETECTOR (loop powered) for linear smoke detection supplied with reflector for distance from 3 up to 100 meters, integrated isolator, visible ray for alignment, EN54-12, for ALPHA 500/1000 panels



Complete range of products and systems
for fire alarm installations

Local Dealer

SD³

41 rue du saule trapu,
ZA du moulin de Massy
91300 MASSY, FRANCE
tel: +33 (0)1 60 13 67 24
fax: +33 (0)1 60 13 67 26
E-mail: sd3@sd3.net

